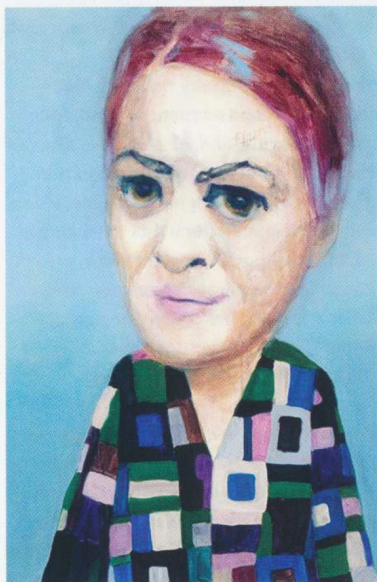


Care (POPC). Adibi installed a shelf system featuring a variety of succulents in a large west-facing window. The DFCI's artist-in-residence program was designed by **William F. Pirl MD '94, MPH '08, RI '14**, the vice chair of POPC, who connected with Adibi during their fellowship year. "A lot of her work focuses on life and time, change and transformation," he told DFCI Online. "It's a message I thought would be excellent for our team to explore."

These Sounds Fall Into My Mind, an exhibition at Morán Morán by **Eve Fowler RI '19**, included video and six wall pieces alongside *with it which it as it if it is to be, Part II*, the 30-minute film that was her Radcliffe project. The film documents 20 women artists in the later years of their careers.

Four sculptures by **Catherine Bertulli BI '83** appeared in *Dressed*, an exhibition at the Danforth at Framingham State University. The works in the show, says the museum, referenced "the intricacies of covering the body, the meaning held in garments, and the gendering of handwork."

Authorship, Architecture, Anonymity: The Impossible Career of Petra Andrejova-Molnár, an exhibition by **Katarina Burin RI '18**, was on view at Bennington College's Suzanne Lemberg Usdan Gallery.



Burin spent a decade developing the character of Andrejova-Molnár, producing the models and drawings, décor, and ephemera that make up the fictional visual archive on display.

This past fall, work by **Colleen Kiely RI '01** was featured in a pop-up solo exhibition, *Women on the Verge*, at Boston's The Cost Annex. Her work also appeared in a group exhibition at the University of New Hampshire Museum of Art, *The Odyssey Project: An Old Story for Modern Times*.

ABOVE: Beth Galston's *Floating Garden*, cast resin, amber-colored LEDs, copper tubing, and electrical wires; **AT LEFT:** Colleen Kiely's *Paula*, oil and acrylic on wood panel, 48" x 36", 2019

Beth Galston BI '91 is collaborating with Bartek Konieczny on a public art project for the MBTA's upcoming Gilman Station, part of the Green Line Extension project. Last year, her work was included in *Avant Gardens* at the Newport Art Museum, in Rhode Island, and in *Horizons: As Above, So Below* at the Portsmouth Arts and Cultural Center, in Virginia. In addition, her large-scale sculpture *Floating Garden* has been permanently installed in The Pioneer, an apartment building in Everett, Massachusetts.

AT LEFT: WILL HOWCROFT; TOP: CLEMENTS PHOTOGRAPHY AND DESIGN